

2017 ACTTBA State Champs



Oil Pattern Distance: 38 Feet	Reverse Brush Drop: 38 Feet	Oil Per Board: 50 uL
Forward Oil Total: 10.45 mL	Reverse Oil Total: 11.2 mL	Volume Oil Total: 21.65 mL
Forward Boards Crossed: 209 Boards	Reverse Boards Crossed: 224 Boards	Total Boards Crossed: 433 Boards

	Start	Stop	Loads	Speed	Crossed	Start	End	Feet	T.Oil
1	2L	2R	1	14	37	0.0	0.0	0.0	1850
2	7L	7R	2	18	54	0.0	5.1	5.1	2700
3	9L	9R	2	18	46	5.1	10.2	5.1	2300
4	10L	10R	2	18	42	10.2	15.3	5.1	2100
5	13L	13R	2	18	30	15.3	20.4	5.1	1500
6	2L	2R	0	10	0	20.4	38.0	17.6	0

Navigation: Forward Reverse More

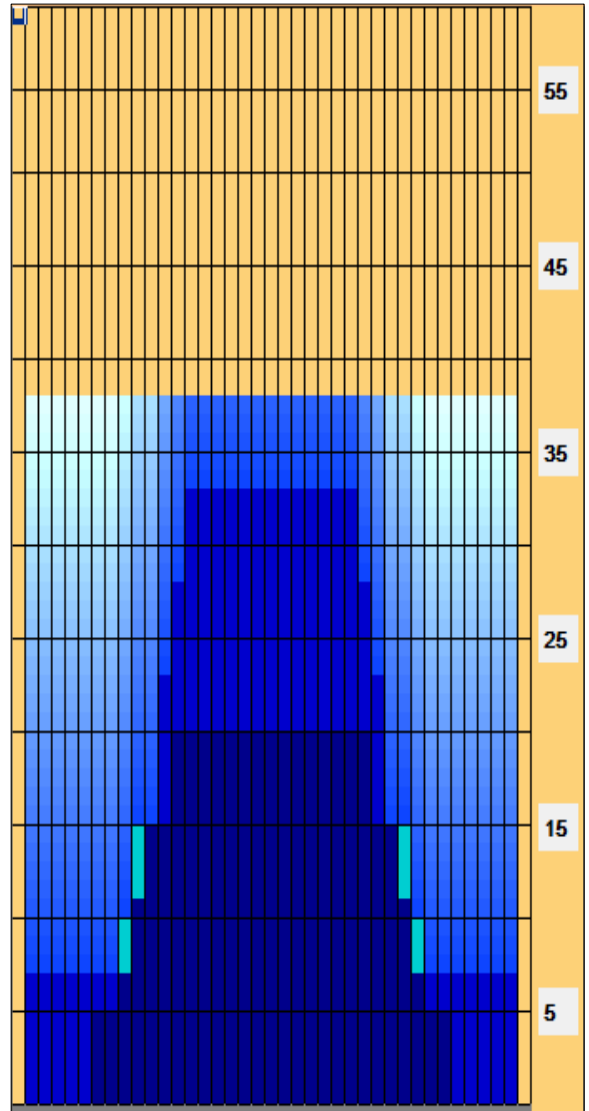
	Start	Stop	Loads	Speed	Crossed	Start	End	Feet	T.Oil
1	2L	2R	0	30	0	38.0	33.0	-5.0	0
2	14L	14R	2	18	26	33.0	27.9	-5.1	1300
3	13L	13R	2	18	30	27.9	22.8	-5.1	1500
4	12L	12R	3	18	51	22.8	15.2	-7.6	2550
5	11L	11R	2	14	38	15.2	11.3	-3.9	1900
6	10L	10R	2	14	42	11.3	7.4	-3.9	2100
7	2L	2R	1	14	37	7.4	5.5	-1.9	1850
8	2L	2R	0	14	0	5.5	0.0	-5.5	0

Navigation: Forward Reverse More

Conditioner:
Type In or Select One

TransferType:
Type In or Select One

- Forward
- Reverse
- Combined
- Buff



Modified Easy Street pattern

Item	3L-7L:18L-18R	8L-12L:18L-18R	13L-17L:18L-18R	18L-18R:17R-13R	18L-18R:12R-8R	18L-18R:7R-3R
Description	Outside Track:Middle	Middle Track:Middle	Inside Track:Middle	Middle: Inside Track	Middle:Middle Track	Middle:Outside Track
Track Zone Ratio	8.75	2.23	1.02	1.02	2.23	8.75

